

Curriculum Development at the Berlin University of Applied Sciences

Promotion of Sustainability in the Textile and Garment Industry in Asia-FABRIC

Curriculum Development at the Berlin University of Applied Sciences



Prof. Dr. Florian Schindler,

Director, Institute of Distance Learning,
Berlin University of Applied Sciences and Technology, Berlin
Germany

**on behalf of giz FABRIC and adelphi consult GmbH
Berlin**

Curriculum Development

- i. Success Factors
- ii. Training Need and Demand Assessment (next presentation today)
- iii. Curriculum Development Process (flow chart)
- iv. Curriculum Development Team (management set-up)
- v. Formalities within the Curriculum Commission (rules and regulations)
- vi. Formal Approvals of a Curriculum (putting the curriculum into operation)
- vii. External Accreditation

How to set-up a new curriculum a new study program

5 "Success Factors"

1. Innovative Idea.

3. External
Partner /Industry.

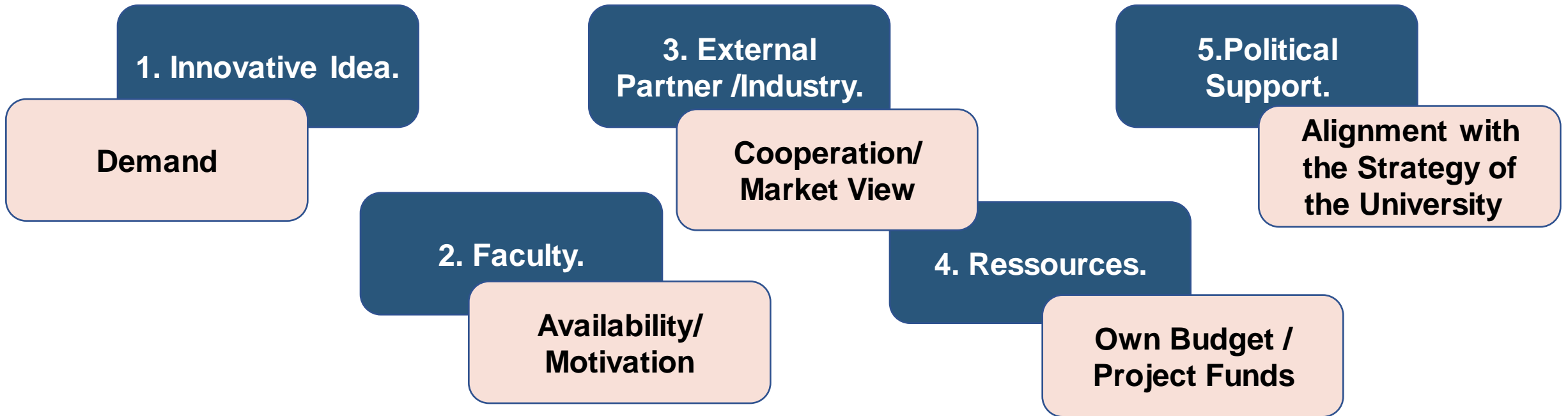
5. Political
Support.

2. Faculty.

4. Ressources.

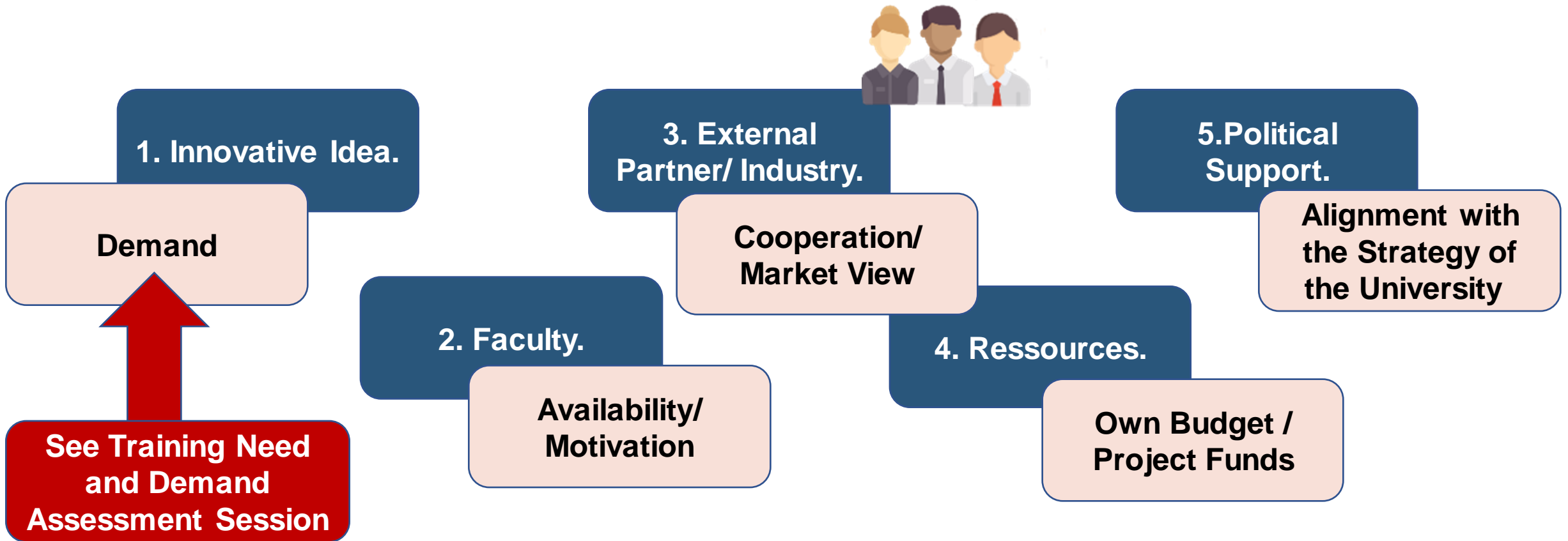
How to set-up a new curriculum a new study program

5 "Success Factors"

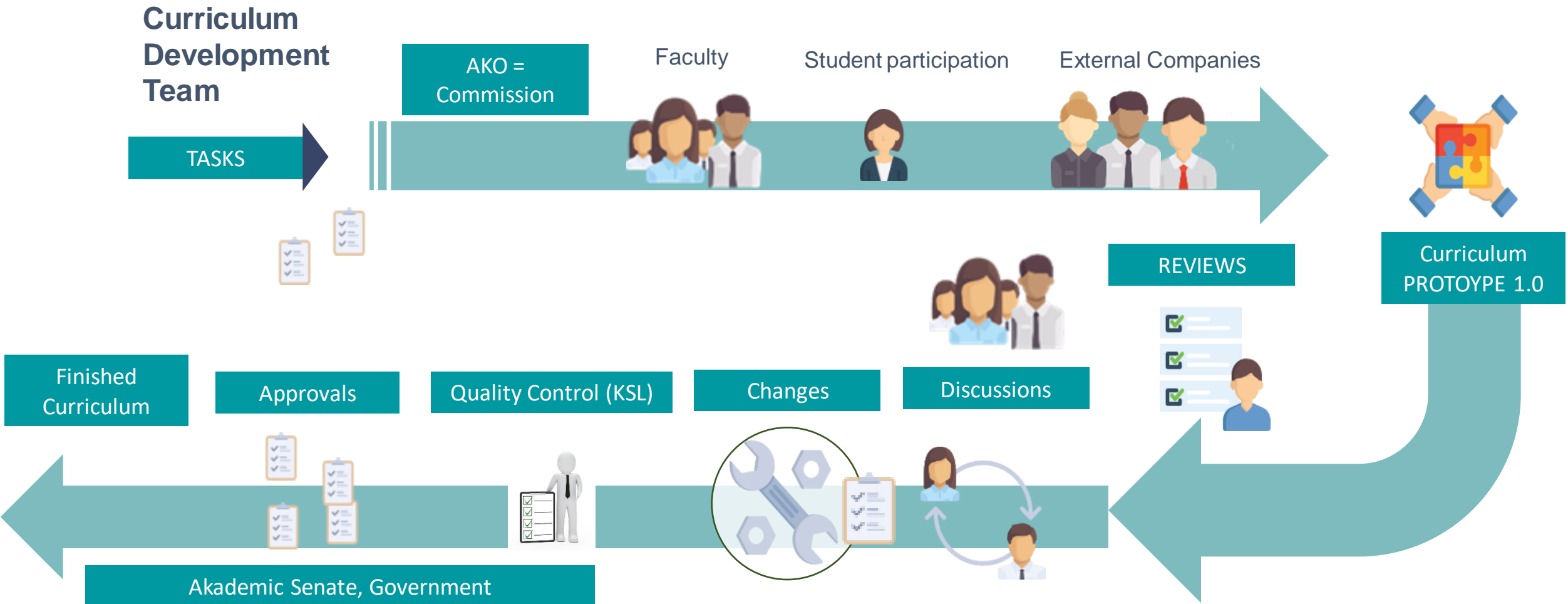


How to set-up a new curriculum a new study program

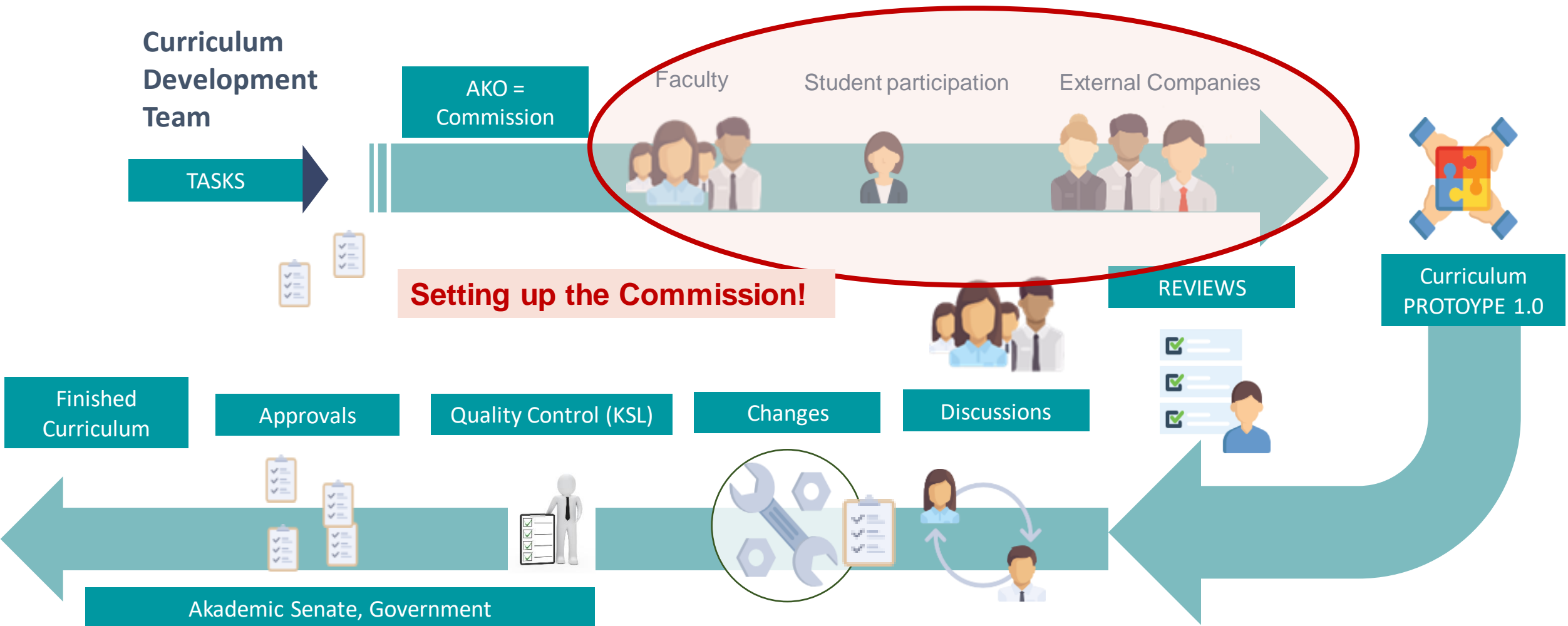
5 "Success Factors"



Curriculum Development Process



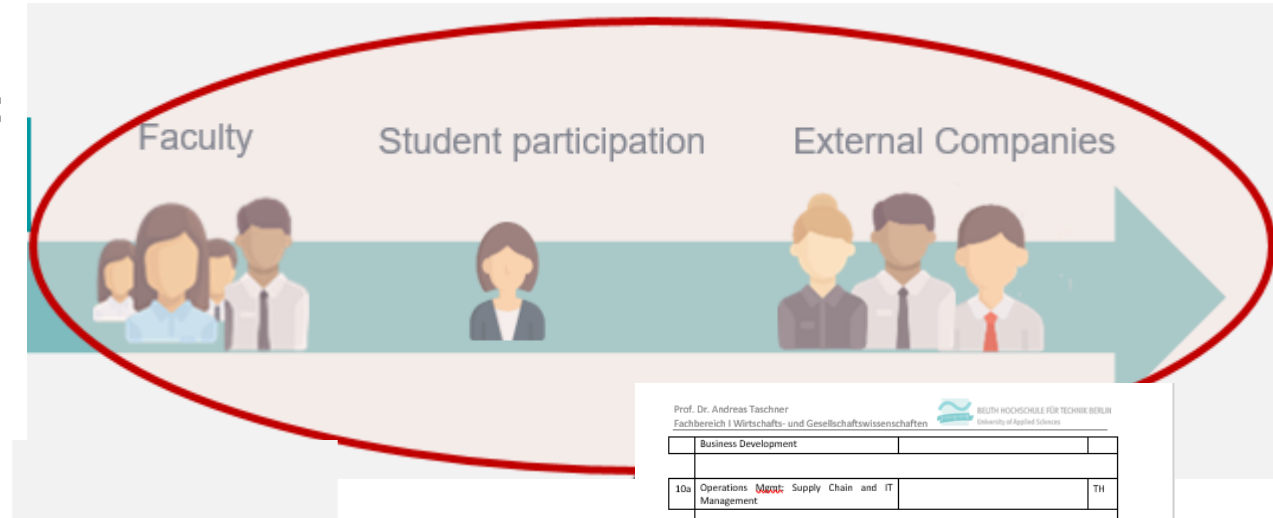
Curriculum Development Process



Set-up/ constitution of a curriculum commission

The Constitution of a Curriculum Commission:

- Head of the commission.
- Faculty / university employees /Laboratory or assisting Staff.
- Students—often in parity with the professors/university employees—laboratory or assisting staff.
- External Partner (often with no right to vote).
- Other Guests.



power to vote for individual members.

Prof. Dr. Andreas Taschner
 Fachbereich I Wirtschafts- und Gesellschaftswissenschaften
 BEUTH HOCHSCHULE FÜR TECHNIK BERLIN
 University of Applied Sciences

	Business Development		
10a	Operations Manag. Supply Chain and IT Management		TH
10b	Operations Manag. Quality Management		TH
11	Integrated Business Plan Praxischarakter, wissensb. Case Study		FS
12	HR and People Management Management and Leadership, Professional Decision Making, Verantwortlicher: Schindler Beratung, personal development, diversity, intercultural issues, etc.		FS

Die Module 2a und 2b sowie 10a und 10b stellen jeweils Wahlpflichtfächer dar, alle anderen Module sind Pflichtfächer.
 Aktuelle Einteilung der Modulverantwortung:
 BB = Berthold ~~Berold~~
 SE = Susanna ~~Eichmann~~
 AT = Andreas Taschner
 DP = Dieter Pumpe
 FS = Florian Schindler
 TV = Tina Völker (~~Berold~~)
 HS = Hans Schmitz
 TH = Tobias ~~Happel~~

Team Members

Curriculum Development Team

Market / Demand Study
Need Assessment

Curriculum
Development
Team

TASKS

AKO =
Commission

Faculty

Student participation

External Companies



REVIEWS

Curriculum
PROTOTYPE 1.0

Finished
Curriculum

Approvals

Quality Control (KSL)

Changes

Discussions

Akademic Senate, Government

Curriculum Development Team

Curriculum Development Team

TASKS

AKO = Commission

Faculty

Student participation

External Companies

Iterative (agile) Proces.

REVIEWS

Curriculum PROTOYPE 1.0

Finished Curriculum

Approvals

Quality Control (KSL)

Changes

Discussions

Akademic Senate, Government

Formalities within the Curriculum Commission

Formalities within the Curriculum Commission.

The set-up has to be defined by the university:

General rules on how to assemble a commission for curriculum development.

Definition of the members of the commission.

The Protocols of the Curriculum Commission have to be kept and shared with a wider faculty group.

New people can be invited to different commission meetings.

Protocols of the Curriculum Commission.

Prof. Dr. Andreas Taschner
 Fachbereich I Wirtschafts- und Gesellschaftswissenschaften
 BEUTH HOCHSCHULE FÜR TECHNIK BERLIN
 University of Applied Sciences

Ausbildungskommission "Renewable Energy Management"
Endgültige Modulliste

Die AKO hat in ihrer Sitzung vom 20. April 2010 die folgende endgültige Modulliste verabschiedet:

Nr.	Modulname (Arbeitsittel)	Bemerkungen	
1	RE & EE Systems and Concepts	Überblick über die Technologien .	BB
The course module will be an introduction and overview on relevant Renewable Energy and Energy Efficient technologies: photovoltaics, solar thermal, concentrating solar power (CSP), wind energy, hydro energy, geothermal, biogas, solid biomass, biofuels and energy efficiency in the built environment and in industry and commerce. Starting with definitions of technical terms the course then introduces the most important physical and electro-technical fundamentals and explains common concepts and applications for heat and electricity generation and energy efficiency. Each technology and the relevant components will be explained , as well as complete systems.			
2a	Advanced Renewable Energy Technologies	Vertiefung in Richtung RE	BB
This module focuses on the integration of renewables into the grid (electricity generation), their use within rural electrification and for heating (hot water for residential, space heating, process heating) or cooling. The relevant aspects of economic viability, spatial planning, system design, approval, commissioning, operation and maintenance for different technologies will be explained . Relevant technology-specific questions like grid integration or integration into existing heating or cooling systems will be addressed .			
2b	Energy Management & Energy Efficiency	Vertiefung in Richtung EE	BB
This module addresses all aspects of energy efficient management, products and applications in industry, and commerce and buildings. The course covers the economics of energy efficient technologies as well as project management issues. The course will impart an understanding of the project management processes to implement energy efficiency projects and develop an understanding of different stakeholders like investors, financing institutions, project developers. The training focuses also on cost effectiveness of different EE measures, legal frameworks and standards.			
3	Leadership, Communication and Negotiation Skills	"Soft skills" explained	FS
Verantwortlicher? A. Duck? Novak? Uux?			
4	Project Management		DP
Die Studierenden kennen die wichtigsten Methoden des Projektmanagements. Sie sind in der Lage, ein Projekt aufgabengerecht zu strukturieren und die daraus abgeleiteten Methoden einzusetzen. Die Durchführung kann auch auf die Durchführung eines konkreten Projektes der jeweiligen Fachrichtung ausgeweitet werden.			

Prof. Dr. Andreas Taschner
 Fachbereich I Wirtschafts- und Gesellschaftswissenschaften
 BEUTH HOCHSCHULE FÜR TECHNIK BERLIN
 University of Applied Sciences

Business Development		
10a	Operations Manag. Supply Chain and IT Management	TH
10b	Operations Manag. Quality Management	TH
11	Integrated Business Plan Erweitertes Case Study	FS
12	HR and People Management Management and Leadership, Professional Decision Making, Verantwortlicher: Schindler Recruiting, people development, diversity, intercultural issues, etc.	FS



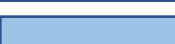

Die Module 2a und 2b sowie 10a und 10b stellen jeweils Wahlpflichtfächer dar, alle anderen Module sind Pflichtfächer.

Aktuelle Einteilung der Modulverantwortung:

BB = Berthold ~~Breis~~
 SE = Susann ~~Eichmann~~
 AT = Andreas Taschner
 DP = Dieter Pumpe
 FS = Florian Schindler
 TV = Tina Völker ~~(Depp)~~
 HS = Hans Schmitz
 TH = Tobias ~~Uapel~~.

Types of Examinations

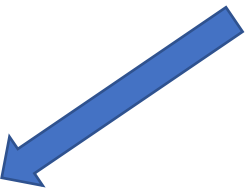
semester 

- Group Work. 
- Written Exam*. 
- Online Exam. 
- Home work. 

*under vigilance.

	Module	Einsendeaufgaben	Prüfungsform	Bemerkung
1. Semester				
M01	RE and EE Systems and Concepts	Gruppenarbeit 2/3 (Vorschlag Hr. Breid)	Online Klausur (multiple Choice)	Klausur 1/3 (geändert nach Absprache Hr. Breid)
M02	Energy Policy and Economic Framework	EA	Klausur unter Aufsicht	Klausur 2/3
M03	Accounting	EA	Gruppenarbeit	Gruppe 2/3
2. Semester				
M04a	Advanced Practical Renewable Energy and EE Implementation	Protokoll/Bericht Praktikum 2/3	Klausur unter Aufsicht (multiple Choice) 1/3	Klausur 1/3 (geändert nach Absprache Hr. Breid)
M04b	Quality and Supply Chain Management	EA	Klausur unter Aufsicht	Klausur 2/3
M05	International Business Law	EA	Online-Klausur	Klausur 2/3
M06	Investment and Financing	EA	Gruppenarbeit	Gruppe 2/3
3. Semester				
M07	Project Management	EA	Gruppenarbeit	Gruppe 2/3
M08	Marketing Analysis and Instruments	EA	Klausur unter Aufsicht	Klausur 2/3
M09	HR and People Management	EA	Online-Klausur	Klausur 2/3
4. Semester				
M10	International Management	EA	Klausur unter Aufsicht	Klausur 2/3
M11a	Energy Management and Energy Efficiency	EA	Online-Klausur	Klausur 2/3
M11b	Advanced Renewable Energy Technologies	EA	Online-Klausur	Klausur 2/3
M12	Integrated Business Plan Development	EA	Gruppenarbeit	Gruppe 2/3
5. Semester				
M13	Master Thesis			
M14	Oral Master Examination			

Rating
or
share/ part
of the total result
= 1/3 plus 2/3



Curriculum Development Team

Curriculum Development Team

TASKS

AKO = Commission

Faculty

Student participation

External Companies

Quality Assurance through experienced Quality Team (KSL)

REVIEWS

Curriculum PROTOYPE 1.0

Finished Curriculum

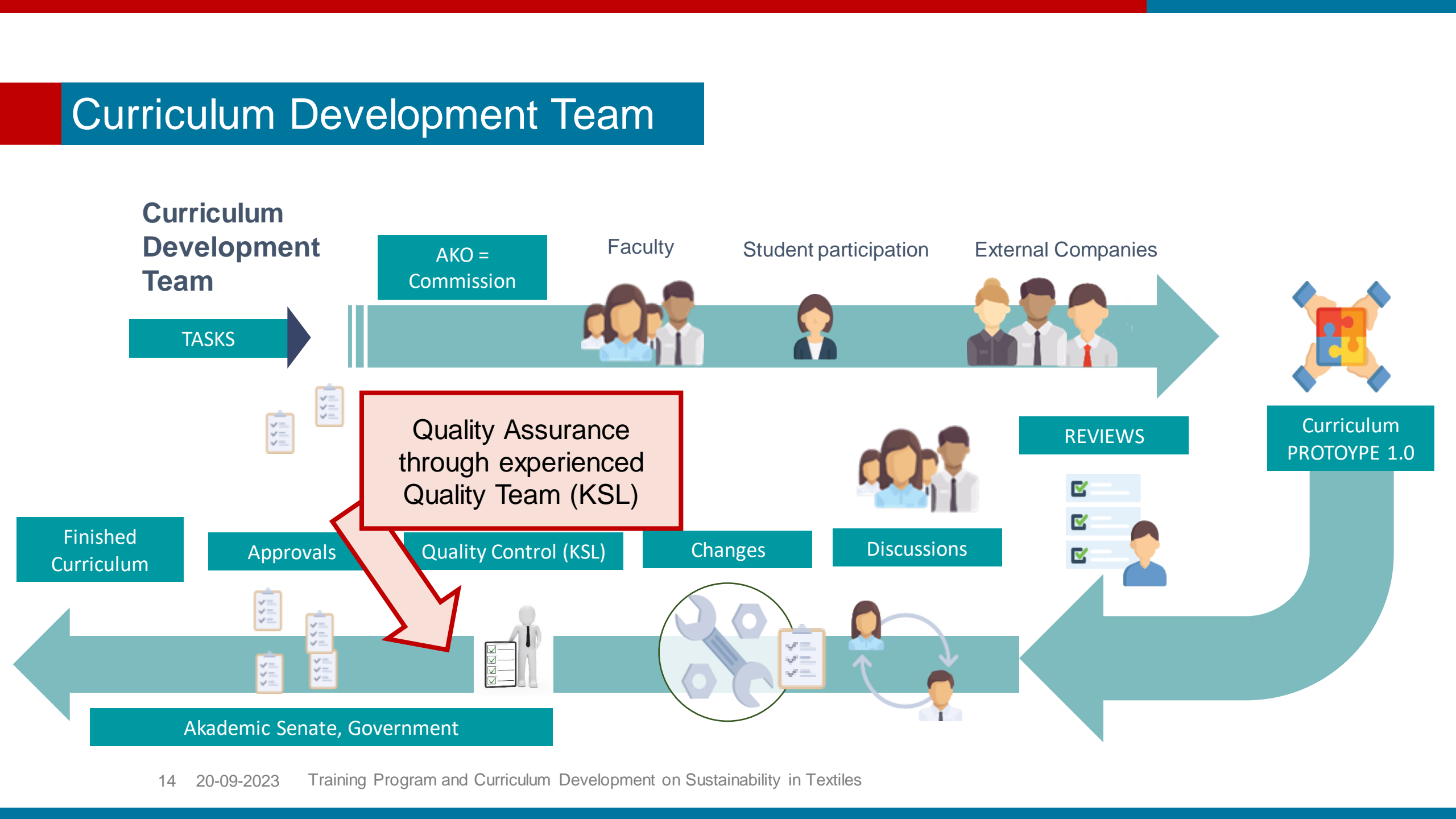
Approvals

Quality Control (KSL)

Changes

Discussions

Akademic Senate, Government



Curriculum Development Team

Curriculum Development Team

TASKS

AKO = Commission

Faculty

Student participation

External Companies



Formal Approval

Finished Curriculum

Approvals

Quality Control (KSL)

Changes

Discussions

REVIEWS

Curriculum PROTOYPE 1.0

Akademic Senate, Government

Formal Approvals of a Curriculum

Formal Approvals.

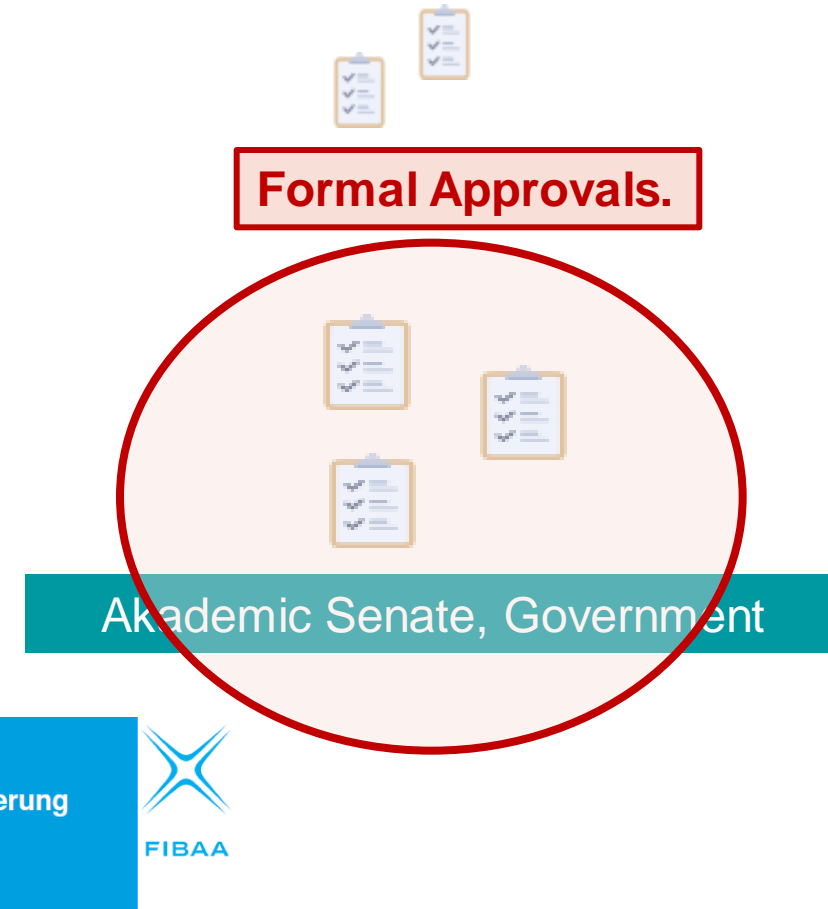
Faculty/Departmental approval
(Department Meetings with the Dean or HODs)

General Approval by the Academic Senate

*-with professors, lecturers, faculty members,
university employees, representatives of student
groups and students.*

Approval by the local, state, or ministry

Approval and Quality Control/Audits:
Accreditation Organization/Council



External Accreditation

External Accreditation

The external quality control is done by independent accreditation agencies (like FIBAA, AQUIN, and ASIIN) with the help of regular external audits.

- **Initial Audit (Starting a program)**
- **Re- Accreditation Audits (every 5-7 years)**
- **Re-Accreditation Audits (every 5-7 years)**
- **The study program by the Accreditation Agency involves writing an audit report and finally presenting it to an accreditation council for final recognition and approval.**



**Deutsche Gesellschaft für
Internationale Zusammenarbeit (GIZ) GmbH**

Registered offices
Bonn and Eschborn

Friedrich-Ebert-Allee 32 + 36
53113 Bonn, Germany
T +49 228 44 60 - 0
F +49 228 44 60 - 17 66

Dag-Hammarskjöld-Weg 1 - 5
65760 Eschborn, Germany
T +49 61 96 79 - 0
F +49 61 96 79 - 11 15

E info@giz.de
I www.giz.de